



LINS
BERG
ASIA



adults
only ¹⁶⁺

Price list

HOTEL | THERMAE | SPA | SEMINARS

THERMAL BATH INSTEAD OF FAR AWAY

valid from Oct. 24

Thermae incl. sauna

The spacious thermal baths and spa area offer a wide range of pools as well as themed saunas and cabins over an area of 15,000 m². Guests have access to **11 pools & 9 saunas** in total. With its hotel spa and private spa, the resort as a whole is home to over **14 pools** with varying temperatures as well as **15 saunas**, infrared cabins and steam baths.

	MON - FRI	SAT - SUN Bridge- & Public holidays
FULL-DAY TICKET (IF YOU BUY UNTIL 12.00 p.m.)*		
Adults (from 16 years)	from € 48.50	from € 52.00
Seniors (from 65 years with valid I.D)	from € 44.50	from € 48.00
Special groups **	from € 41.00	from € 43.50
AFTERNOON TICKET (IF YOU BUY FROM 12.00 p.m.)*		
Adults (from 16 years)	from € 44.50	from € 48.50
Seniors (from 65 years with valid I.D)	from € 41.00	from € 44.00
Special groups **	from € 38.00	from € 41.00
EVENING TICKET (IF YOU BUY FROM 04.00 p.m.)*		
Adults (from 16 years)	from € 35.00	from € 38.50
Seniors (from 65 years with valid I.D)	from € 32.50	from € 35.50
Special groups **	from € 32.50	from € 35.50
3-HOUR TICKET*		
Adults (from 16 years)	from € 32.50	from € 35.00
Seniors (from 65 years with valid I.D)	from € 29.50	from € 31.50
Special groups **	from € 29.50	from € 31.50
Every additional 1/2 hour	from € 3.30	from € 3.30

GROUP RATES

from 10 people on request

LONGER NIGHT-TIME OPENING IN THE THERMAE

Open until 01.00 a.m. incl. special midnight sauna infusion
massage offers are available until 9 p.m. (September - May & Saturday 23.8.2025)
(all times and dates on www.linsbergasia.at)

Evening ticket from 08:00 p.m - 01:00 a.m. from € 33.00

ANNUAL TICKETS

Monday - Thursday from € 1 030.00

Monday - Sunday from € 1 565.00

(Surcharge for New Year's Eve & special events possible)

DEPOSIT: The one-time chip deposit for holders of annual tickets is € 20.00

LINSBERG ASIA THERMAE-LOYALTY PASS

After the 10th thermae visit, the 11th visit **of the same category** is free.

* All admission incl. sauna for adults (from 16 years). **Students from 16 years, conscripts and those performing community service up to the age of 26, as well as guests from 50% disability (**Only with valid ID**).

Prices are subject to change.

Opening Hours

	SUN -THU	FRI - SAT
	Public holidays before business days	Bridge & public holidays & days before public holidays
Thermae	09.00 a.m. - 10.00 p.m.	09.00 a.m. - 11.00 p.m.
Sauna	10.00 a.m. - 9.40 p.m.	10.00 a.m. - 10.40 p.m.
Bathing time ends	09.40 p.m.	10.40 p.m.
Spa	09.30 a.m. - 6.00 p.m.	09.30 a.m. - 06.00 p.m.

During our overhaul (23.6.2025 - 27.6.2025) the thermae and Spa area are closed.

Thermae & Private Spa

Whether birthday, bachelor(ette) party or simply sociably spending time together, whether on vacation or during your thermal bath visit: in the private spa of the thermal bath Linsberg Asia you can find a very special ambience for it.

6 hours use of thermae (including use of sauna area and guided infusions) - of which 3 hours exclusive Private Spa.

Our private spa can be booked as an exclusive spa area for small groups of two to six persons between 10 am and 9 pm:

Morning:	Morgenröte	10.00 a.m. - 01.00 p.m. or
Afternoon:	Wellnessgeflüster	02.00 p.m. - 05.00 p.m. or
Evening:	Dämmerstunde	06.00 p.m. - 09.00 p.m.

- * Use fluffy bathrobe, bath towels, slippers during your stay
- * private steam bath at a pleasant temperature
- * sanarium with gentle colour and sound elements
- * exclusive rest area for relaxation
- * separate shower and changing room
- * Prosecco & sweets

For external guests

from € 250.00 for 2 persons: **6 hours thermae** - of which 3 hours Private Spa

from € 270.00 for 2 persons: **day ticket thermae** - of which 3 hours Private Spa

from € 230.00 for 2 persons - for hotel guests



NEW

Thermae & Refugium -

Cosy futon loungers in the sauna area with reservation

Offer for 2 persons includes:

- * All-day admission to the spa for 2 persons & use of the sauna area including guided infusions
- * futon couch for 2 persons with cushion and blanket
- * 10 % voucher for selected items in the spa shop
- * Participation in the movement and relaxation program

from € 113.00 für 2 persons - (MON - FRI)

from € 122.00 für 2 persons - (SAT, SUN, public holidays)

from € 24.00 für 2 persons - (for hotel guests)



NEW

Thermae & Refugium -

Relax lounge in the thermae area with reservation

Offer for 2 persons includes:

- * All-day admission to the thermae bath for 2 persons
- * Relax lounge (double lounge) with cushion and blanket
- * 1 bottle of prosecco,
- * Sweet and savory nibbles
- * Homemade chocolates
- * 10 % voucher for selected articles in the spa shop
- * Use of the sauna area including guided infusions
- * Participation in the exercise and relaxation program

from € 154.00 for 2 persons - (MON - FRI)

from € 162.00 for 2 persons
(SAT, SUN, public holidays)

from € 71.00 for 2 persons
(for hotel guests)



THAI HUTS

In the outdoor area of the thermae, 4 Thai huts in Far Eastern style are at your exclusive disposal. Bookable from May to September (in fair weather).

Included: 1 twin-lounger, 1 bathrobe, 1 bath towel and 1 pair of flip flops per person, dried bananas, nuts, pralines, 2x smoothie, fortune cookies.

Full day for 2 persons

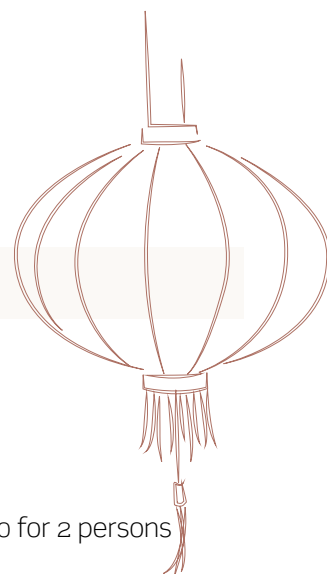
from € 80.00 (excl. thermae)

Half day (6 hrs.) for 2 persons

from € 65.00 (excl. thermae)

Thermae offers

also available as vouchers!



THERMAE & RELAX

Thermae-duo deluxe - fo 2 persons

* 1x full day entry to the thermae

* Bathing kit with a bathrobe, towel, (rental fee) and flip flops

* Red Lotus Cocktail

* € 3.00 voucher per person for a main menu (valid for food in the thermae restaurant Red Lotus - per person)

MON - SUN from € 147.00 for 2 persons

NEW

Birthday pleasure

Half admission - double the pleasure.

Indulge yourself on your birthday - and do what's good for you: treat yourself to pure relaxation, peace & wellness at its best.

The advantage for birthday children:

* 50 % discount on the day ticket, afternoon ticket or on the evening ticket

* 1 glass of Prosecco, Prosecco Orange or orange juice

The offer is only valid on the birthday on presentation of a valid photo ID.

THERMAE & CUISINE

NEW

Thai Dinner & Thermae

* 1x full day entry to the thermae

* 4-course menu (individually selectable from a diverse selection of dishes)

Upcoming events: www.linsbergasia.at

from € 95.00

Breakfast & Thermae

* 1x full day entry to the thermae

* Breakfast buffet in the Hotel Restaurant China Grill

MON - FRI from € 78.00

SAT - SUN from € 81.00

Dinner & Thermae

* 1x full day entry to the thermae

* Dinner buffet in the Hotel Restaurant China Grill

(The evening meal is a combination of an extensive buffet and served dishes: there are 7 different main courses to choose from each day)

MON - FRI from € 95.00

SAT - SUN from € 99.00

Linsberg á la Carte & Thermae

* 1 x full day entry to the thermae

* Aperitif

* 3-course menu (soup - main dish - dessert)
in the award-winning restaurant " das Linsberg"

TUE - THU from € 116.00

After Work

* 1 x thermae admission from 4.00 p.m.

* Wok of choice (with meat or vegetarian) and rice

* 1 x Soft-Drink 0,33 l, or mineral water 0,5 l

MON - FRI from € 48.00

Relaxation day 60+ every TUESDAY

* 1 x full day - thermae admission (if purchased before 12.00 o'clock)

* Voucher for Sacherwürstel in the cafe "Green Bamboo"

ON TUESDAYS ONLY from € 43.00
except for holidays and bridge days (subject to change)

THERMAE & TREATMENTS

The offers are valid from Mon-Fri. The offers are also available on weekends, public holidays and bridging days, on payment of a supplement.

Small time out

* 1 x full day entry to the thermae

* 1 x Linsberg Asia classic massage (25 mins)

MON - FRI from € 95.00
(€ 9.50 saving)

Asia time out

* 1 x full day entry to the thermae

* 1 X tuina massage (25 mins)

MON - FRI from € 97.00
(€ 9.50 saving)

Beauty time out

* 1 x full day entry to the thermae

* 1 x asia facial massage (25 mins)

MON - FRI from € 95.00
(€ 9.50 saving)

NEW

Asia Beauty Day

* 1 x full day entry to the thermae

* 1 x Asia Lifting Boost (70 mins)

* 1 x St Barth Sunrising - body peeling (45 mins)

* 1 x Linsberg Asia classic massage or foot reflexology massage (25 mins)

* 1 x soft drink in the Zen Lounge

MON - FRI from € 279.00
(€ 54.50 saving)

NEW

Asia Wellness Day

* 1 x full day entry to the thermae

* 1 x St Barth Firming - body treatment with head massage(45 mins)

* 1 x balinese massage (70 mins)

* 1 x soft drink in the Zen Lounge

MON - FRI from € 249.00
(€ 28.50 saving)

Hydrojet massage lounge

15 minutes

from € 17.00

20 minutes

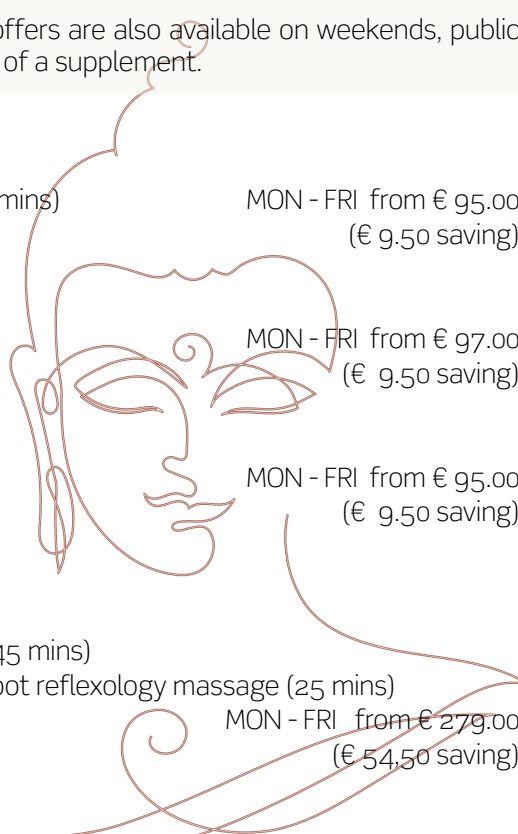
from € 22.00

Solarium

every 5 minutes from € 6.00

Collarium

every 5 minutes from € 7.00



Exercise and relaxation plan

The entire exercise and relaxation plan is included for our guests.

The price for external guests: from € 16.00 per unit

Signature treatments



NEW

TOK SEN - thai tapping and vibration massage

Tok Sen is a very old healing art from the north of Thailand from the time of Lana more than 5000 years ago. 'Tok' is the sacred sound made by tapping the wooden wedge with a wooden hammer and "Sen" is the word for the energy lines of the body. The Tok-Sen massage is an energetic healing method. The tapping and vibrating loosens the skin tissue and muscles and increases blood circulation.

Physical and mental blockages can be released.

70 mins from € 135.00



Balinese Massage - the massage of kings and queens

Embark on a journey of relaxation into the empire of the senses. This holistic massage combines soothing touches, long strokes with pressure point technique and skilful Asian massage techniques. Deep-seated tension is released, relieve muscle and joint pain. Escape the hustle of everyday life - and give in to a feeling of well-being, peace and deep relaxation.

70 mins from € 135.00



St Barth Chill Out - shell massage

The incomparable full body spa massage with „warm shells“ applies intensive grips that feel gentle and flowing. They stimulate blood circulation, relieve muscle tension and can have a calming influence on stress-related states of tension.

A gentle touch for body and soul, which with Caribbean savoir-vivre opens up a world of deep well-being.

80 mins from € 135.00



Linsberg Asia relaxation massage

This full-body massage is used for stress reduction and deep relaxation. Various massage techniques are used to give body, mind and soul rest and relaxation. It has a circulation-promoting, muscle-relaxing and joint-mobilising effect. At the end of the massage a warm compress is placed on the spine (including 10 min of rest time at the end).

80 mins from € 145.00

NEW

St Barth Richness - luxurious anti-ageing - for face, neck & décolleté

This exclusive anti-ageing treatment begins with a moment of relaxation with a neck and head massage. The main focus of the treatment is on the manual lifting modelling technique to redefine the contours of the face in a natural way, improve the structure of the skin and make the complexion glow. Luxurious skincare products, combined with pure plant extracts deliver unforgettable experiences. Head and neck massage, cleansing, exfoliation, facial massage, mask and hand massage, final care.

80 mins from € 150.00

NEW

St Barth Pampering - Nourishing body wrap with head & full body massage



The creamy, silky body wrap gently pampers your body, providing the skin with nutrients and lipids from the highest quality plant oils.

The relaxing massage with gentle stroking movements enhances the effect of the body wrap, relaxes the body and pampers the senses.

90 min from € 147.00

Master Lin Luxury Time-Out - facial treatment

For a visibly even, radiant complexion and a youthful, fresh appearance. After cleansing and exfoliation, the skin is pampered with a regenerating mask. This acts like a true fountain of youth for tired, stressed skin. Jambu and fine gold activate cell renewal and provide instant natural smoothing effect. The subsequent finishing treatment tightens, smoothes and gives the skin elasticity and firmness.

35 mins from € 70.00

Master Lin - „TOUCH YOUR SOUL“ - body treatment



'Touch your soul' was designed for you to promote well-being with the central instrument of Traditional Chinese Medicine. In a unique sequence, the energy flow is stimulated with relaxing massage grips and pressure points, and tensions are soothed. The whole body is touched here - the feet, legs, stomach, back, face and hands.

60 mins from € 135.00

Asian treatments

Marimba bambus massage



Our unique bamboo massage is especially good at reaching the deep muscles all the way to the fasciae. Through the bamboo sticks, local tensions can be released in a targeted manner. The skin tissue and the blood circulation are stimulated with pleasant flowing movements. This Far Eastern treatment gives a wonderful feeling of lightness and frees you from everyday stress.

25 mins from € 58.00 / 50 mins from € 98.00

Nuad thai massage

is a thousands of years old method of body work, also known as Traditional Thai Massage or Passive Yoga. Nuad combines massage with stretching, acupressure, body training and energy work. A state of deep relaxation and regeneration is created by the interaction of gentle, flowing movements, deep stretching and rhythmic relaxation. This treatment is applied on the floor on a mat, without oil.

Please bring comfortable clothing for treatment.

70 mins from € 135.00

Tuina massage



The effect of Tuina therapy from traditional Chinese medicine is based on restoring the balance between Yin and Yang. It is a massage treatment based on two basic concepts called Tui (pushing) and Na (gripping). The Tuina is one of the oldest manual therapies of traditional Chinese medicine and regards body, mind and soul as an inseparable unit.

25 mins from € 58.00 / 50 mins from € 98.00

Nuad tao foot reflexology massage



comes mainly from China, combined with the traditional Thai knowledge and influences from India. The feet are peeled, oiled, loosened, moved and stretched, energy points and zones are processed. By stimulating all energy pathways, the whole body experiences a beneficial energization and a reduction of stress symptoms. This massage is performed with a traditional wooden massage stick.

50 mins from € 105.00

Classic massages



Manual lymph drainage

Manual lymphatic drainage is a gentle massage that promotes the movement of lymphatic fluid in the body. It has a detoxifying and regenerating effect.

50 mins from € 93.00

Combination massage

Enjoy a gentle back massage in combination with our foot reflexology massage.

50 mins from € 93.00

Linsberg Asia classic massage

Tailor-made! This individual massage has its grip techniques and intensity adjusted specifically to your needs, and is powerful and soothing at the same time!

25 mins from € 56.00 / 50 mins from € 93.00

Foot reflexology massage

The foot reflexology massage is based on the assumption that every organ, muscle and bone interact with our feet via reflex paths. This massage serves to increase well-being.

25 mins from € 56.00

Body treatments



NEW

St Barth smoothing scrub - body peel

Full body scrub that enchants with sweet notes of vanilla and coconut.

Pure coconut powder gently removes excess flakes of skin, while the coconut oil supplies the skin with valuable nutrients. The nourishing vanilla extract leaves the skin moisturised and soft. The fragrant and rich vanilla body lotion as a finishing treatment prolongs the moment of relaxation.

45 mins from € 90.00

NEW

St Barth sunrising - body scrub

Relaxing body scrub with avocado oil and white sand. A full-body exfoliating massage that pampers the body and senses with the treasures of nature. The vitamin-rich pineapple extract and fine sand gently remove dead skin cells, while rich avocado oil provides valuable nutrients. Find peace and enjoy purity - the skin is enveloped in an exotic fragrance and feels silky, soft and smooth.

45 mins from € 90.00

NEW

St Barth firming - body wrap

A rich body wrap with ivy gel and camphor & menthol oil, muscle-relaxing and skin-firming, and skin firming. The added pure peppermint extract enhances the detoxifying and revitalising effect of the treatment. A soothing head massage and the final massage of the pack ensure a unique spa experience.

45 mins from € 90.00

Asia sensitive - bog wrap and massage

The muscle-activating bog wrap and subsequent back massage with our very own Asian 'Linsberg Asia oil blend' from St. John's wort, blackberry, papaya and 'Garden of life' achieves a balance between relaxation and activation. The immune system is strengthened and the metabolism stimulated. The treatment provides inner peace and balance and is ideal for tension of all kinds.

40 mins from € 87.00

Cosmetics

NEW

Asian facial massage

A gentle and very soothing treatment that relaxes and balances body and mind. Let yourself be touched in a special way and give yourself a harmonizing break.

Cleansing, massage and final and final skincare treatment.

25 mins from € 56.00

Gua sha - facial massage

Gua Sha comes from Traditional Chinese Medicine and is a massage with the help of gemstones. With gentle pressure, the muscles are relaxed, swelling is reduced and the metabolism is stimulated, making the skin look plumper and rosier. The facial mask that follows has a relaxing and calming effect. We are happy to serve you a cup of Sonnentor tea after the treatment. Cleansing, Gua Sha massage, mask.

35 mins from € 70.00

NEW

St Barth Serenity - head and décolleté massage

An incomparably relaxing experience, through a massage with soothing movements with enchanting notes of vanilla and jasmine. The scalp is nourished with rich nutrients while the hair's natural beauty and shine are revealed.

30 mins from € 65.00

Linsberg Asia Classic - facial treatment

Take some time out and enjoy a soothing facial treatment. After the initial cleansing and peeling, the skin is treated with a moisturising complex of active ingredients and a gentle face massage for deep relaxation. This is followed by a nourishing face mask and final skincare treatment adapted to your skin type.

60 mins from € 103.00

NEW

St Barth Lightness - detox facial treatment

After cleansing and facial peeling, a detoxifying brush massage follows with targeted movements that ensure better absorption of the following active ingredients and at the same time promote the removal of toxins. A hand and arm massage provides relaxation, while a cleansing and regenerating mask with green clay and pineapple takes effect. The skin is visibly refined, leaving you with a radiant complexion.

60 mins from € 120.00

Asia Lifting Boost - anti ageing facial treatment

This holistic facial treatment acts on the head and face like gymnastics on the body. The skin learns to reactivate itself by its own strength. After cleansing with a Gua Sha Scarper and cupping techniques the lymph flow is stimulated and the blood circulation is reinforced. Afterwards you can relax with a mask of rose water, pearl and clay - accompanied by various Shiatsu pressure points that firm the tissue, reduce wrinkles and at the same time increase well-being.

70 mins € 135.00

Pregnancy massage

With this massage expectant mothers can not only be pampered, but also fight many pregnancy complaints. This treatment starts with a gentle lymph drainage for the legs to eradicate any blockages or fluid build-up. It is then followed by a neck & shoulder massage to ease tensions.

50 mins from € 93.00



Blissful moments for two



Relaxation for couples:

Experience pampering moments for two in the couple's cabin: All massages with this symbol can be enjoyed together with your partner in our couples' treatment rooms.



Your path to deep relaxation:

Scan the QR code for massage/cosmetic videos here!
Discover information and details of our exclusive treatments in our videos.
Find out more about the soothing treatments here.
Be inspired and find your favourite treatment!



cosmetic



massage

Cosmetics classics for her & him

Face

Eyebrow shaping	from € 24.00	€ 12.00
Eyebrow tinting	from € 24.00	€ 12.00
Eyelashes dyeing	from € 30.00	€ 16.00
Eyebrow shaping and tinting	from € 30.00	€ 21.00
Eyebrow shaping, tinting and Eyelashes dyeing	from € 40.00	€ 31.00

As part of a
cosmetic treatment

Pedicure

incl. foot bath, -peeling, without varnish 50 mins from € 79.00

incl. foot bath, -peeling, with varnish
(You can take the nail polish bottle with you after the treatment) 50 mins from € 87.00

Manicure

with Ligne St Barth & mavala products, with varnish or massage 40 mins from € 75.00
(You can take the nail polish bottle with you after the treatment)

Varnishing the nails with premium nail polisher von Mavala
15 mins from € 30.00



Spa Etiquette

The spa is a refuge of rest and relaxation – please respect our guests' desire for privacy by not using mobile phones or cameras all throughout the spa area.

In order to make optimal use of your spa experience, we recommend you to relax before your treatment and set aside resting time of around 30 minutes afterwards.

Advance reservations are highly recommended in order to ensure that your preferred date and time is still available, especially if you want to enjoy several treatments during your stay.

Enjoy our wellness treatments & high-quality massages and beauty treatments in our spa zone - also available without admission to the thermae or staying in the hotel.

Appointment via our online booking calendar on the website www.linsbergasia.at or +43 (0) 2627/48 000-353.

Cancellation terms:

Time is a precious commodity.

We kindly ask you to turn up in time for your soothing treatment, as being late will result in a shorter treatment duration.

Should you be prevented from appearing for your appointment, you can **cancel 48 hours before the start of your treatment** at no cost.

Please understand that in case of cancelling later or non-appearance, we must charge the full amount of the treatment.



Seminars & Events

OVERNIGHT STAY PACKAGE Linsberg Asia included services for groups: accommodation in a standard double room for single or double occupancy, half-board, generous breakfast buffet, use of the thermal bath Linsberg Asia with 15,000 m² and hotel spa area, bathrobe, slippers and towels for your stay.

	SUN - THU	FRI - SAT
Room single occupancy	from € 199.00	from € 232.00
Room double occupancy	from € 146.00	from € 178.00
Optionally bookable: Admission Thermae Linsberg Asia € 16,- per person / night		

HALF-DAY PACKAGE from € 65.00
1 snack-break, business lunch, 2 mineral waters or fruit juices from the region

FULL-DAY PACKAGE from € 79.00
2 snack-breaks, business lunch, 4 mineral waters or fruit juices from the region

CULINARY BREAKS

Various break-combinations are available from which you can choose individually. Every break also includes a self-service selection of specialty tea and coffee as well as flavored water (unlimited) in the seminar foyer

CONFERENCE TECHNOLOGY

Standard conference technology is included in each room - 1 screen, 1 projector & audio system, 2 flip charts, 2 pin boards, pads of paper and pens. Additional technology is also available and can be hired on request. All of the conference rooms come with a WIFI connection.

ROOM RENTAL **

Erde	Earth	32 m ²
Holz	Wood	36 m ²
Metall, Feuer, Wasser	Metal, Fire, Water	65 m ²
Feuer & Wasser	Fire & Water	130 m ²
Metall & Feuer & Wasser	Metal & Fire & Water	195 m ²
Pavillon mit Zen Garten	Pavillon with zen garden	190 m ²

** Room rental depending on overnight guests and seminar & room size. Details on request. For one-day events, the room rent will be charged irrespective of the number of persons. Depending on to the number of overnight guests, (one-day) seminars may only be on offer from one month before the event.



contact: Convention & Sales +43 2627 48000 - 320
konferenz@linsbergasia.at



Hotel****S

Accommodation prices* are from prices per person per night for double occupancy inclusive all included services

	from 3 nights stay**	Getting here SUN - THU 1-2 nights stay*	Getting here FRI - SAT, Public holidays, days before public holidays and bridge days 1-2 nights stay**
DOUBLE ROOM MAGNOLIE (36 m²)			
01.10.2024 - 31.03.2025	from € 206.00	€ 217.00	€ 240.00
01.04.2025 - 31.05.2025/01.09.2025 - 30.09.2025	from € 196.00	€ 207.00	€ 230.00
01.06.2025 - 31.08.2025	from € 186.00	€ 197.00	€ 220.00
DOUBLE ROOM ORCHIDEE (36 m²) with views of the Asian garden, pavilion or forest			
01.10.2024 - 31.03.2025	from € 220.00	€ 231.00	€ 254.00
01.04.2025 - 31.05.2025/01.09.2025 - 30.09.2025	from € 210.00	€ 221.00	€ 244.00
01.06.2025 - 31.08.2025	from € 200.00	€ 211.00	€ 234.00
JASMIN JUNIOR SUITE (67 m²) with views of the Asian garden & pavilion, incl. infrared cabin			
01.10.2024 - 31.03.2025	from € 280.00	€ 291.00	€ 314.00
01.04.2025 - 31.05.2025/01.09.2025 - 30.09.2025	from € 270.00	€ 281.00	€ 304.00
01.06.2025 - 31.08.2025	from € 260.00	€ 271.00	€ 294.00
LOTUS EXECUTIVE SUITE (84 m²) with forest view, incl. infrared cabin & terrace			
01.10.2024 - 31.03.2025	from € 313.00	€ 324.00	€ 347.00
01.04.2025 - 31.05.2025/01.09.2025 - 30.09.2025	from € 303.00	€ 314.00	€ 337.00
01.06.2025 - 31.08.2025	from € 293.00	€ 304.00	€ 327.00
LOTUS SUPERIOR SUITE (84 m²) with forest view, incl. infrared cabin, terrace and minibar (incl. consumption) surcharge on Lotus Executive Suite: € 14.00			

* plus tourism levy € 2,50 (subject to change) per person and night. Our room rates can also be booked with a discount of € 20.00 per person and night as room incl. breakfast. Underground parking garage € 10.00 per night. The underground garage is included in the suite rates.

** plus € 23.00 weekend surcharge per person per overnight stay on arrival Friday or Saturday, days before public holidays and bridge days.

The **single room supplement** is € 42.00 per night. **Check In** from 03.00 p.m., **Check Out** until 11.00 a.m.. Use of the thermae and sauna is included from 03.00 p.m. on the day of arrival and until 05.00 p.m. on the day of departure. Use of the thermae on the day of arrival from 09.00 a.m. for a surcharge of € 16.00 per person (admission to the thermae included on the day of arrival for stays of 3 nights and more). Late-Check-Out until 6.00 p.m. and Early-Check-In from 09.00 a.m. for € 84.00 per room on request, subject to availability. **The room rates quoted are not available on New Year's Eve.** Between 27.12.2024 and 06.01.2025 you have the option of booking our New Year's Eve package, minimum stay during New Year's Eve and from 26.12.2024 - 05.01.2025: 2 nights.

LINSBERG ASIA INCLUDED SERVICES

- Half-board (extensive buffet breakfast & 4-course dinner - 7 different mains to choose from - incl. starters, healthy salad & dessert buffet)
- Asian welcome during your arrival with welcome drink
- 1 spa bag with bathrobe, bath towels & slippers will be ready for you to use during your stay
- Use of the thermal bath Linsberg Asia with 15,000 m², 11 pool areas & 9 different theme saunas and guided sauna infusions
- Hotel spa area with gym, 2 indoor saunas, 1 steam bath, 1 infrared cabin, 1 Finnish outdoor sauna, 1 indoor and 1 outdoor whirlpool, 1 hotel indoor pool with relaxation zones and Asian garden with sun terrace
- A bottle of Vöslauer mineral water in the room & Cushion menu
- daily tea ceremony in the thermae
- Free W-LAN access in the public areas of the hotel as well as in the rooms, in the Green Bamboo café (thermal bath area) and in the zen lounge (spa area)
- Free rental of trekking bikes subject to availability
- The entire exercise and relaxation plan is included for our hotel guests.
- Organic tea bar by Sonnentor and juicy apples, nuts and dried fruits
- Greenfee-reduction at the GC Föhrenwald, GC Linsberg, GC Donnerskirchen & GC Schloss Ebreichsdorf
- Use of the hotel wellness area, thermal bath and sauna from 03.00 p.m. on the day of arrival and until 05.00 p.m. on the day of departure included.
- Changing rooms with lockers in the hotel and thermal bath areas for guests arriving earlier or departing later

HOTEL-OFFERS

Please contact us for the latest package offers or see our homepage at www.linsbergasia.at

VOUCHERS - WEBSHOP

At reception and in the webshop (payment by credit card incl. printing at home) you also have the opportunity to acquire vouchers for overnight stays in the hotel, admission to thermal baths or current thermal baths/spa/culinary offers.

CULINARY OPTIONS

À la Carte award-winning Restaurant "das Linsberg"

TUE - SAT 6.30 p.m. - 9.30 p.m.

SUN & MON closing day

The restaurant "das Linsberg" is closed from 22.06.2025 till 11.08.2025

Hotel Restaurant „China Grill“

Breakfast: MON - SUN 07.00 a.m. - 11.00 a.m.

Dinner : MON - SUN 06.00 p.m. - 09.30 p.m.

Please note changes to opening hours during the main season or the summertime

Pianobar

SUN - FRI 03.00 p.m. - 00.30 a.m. / SAT 03.00 p.m. - 01.30 a.m.

Please note changes to opening hours during the main season or the summertime.

Breakfast for our external guests from € 36.00 p.P.

Dinner for our external guests from € 53.00 p.P.

The evening meal as part of the half-board offer is a combination of an extensive buffet (starters, salads, soups, desserts and cheese) and served dishes: there are 7 different mains to choose from each day.

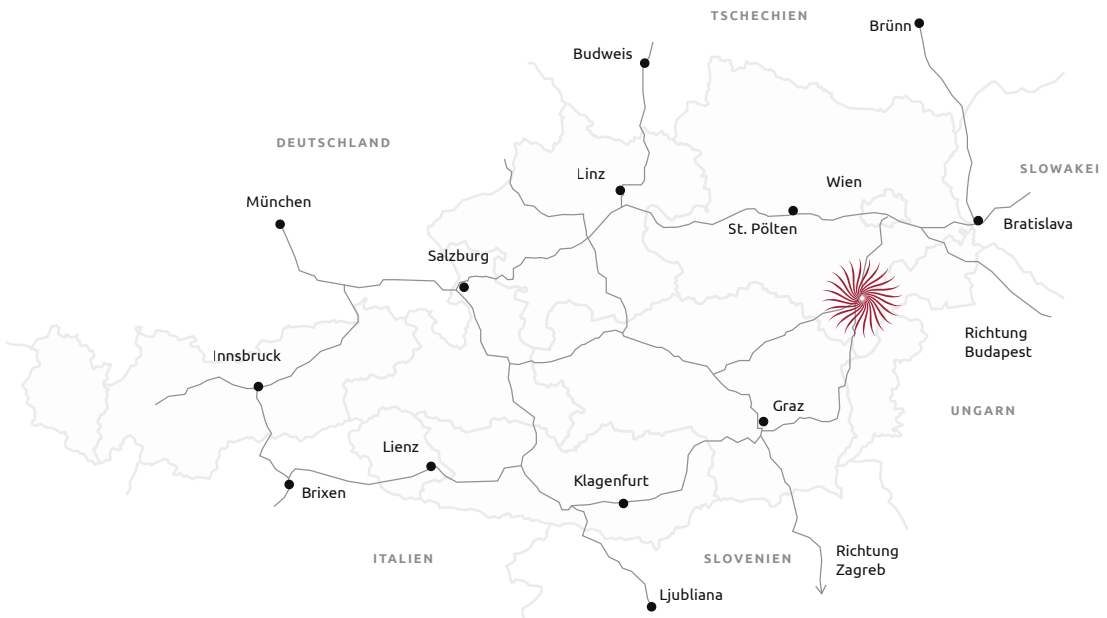
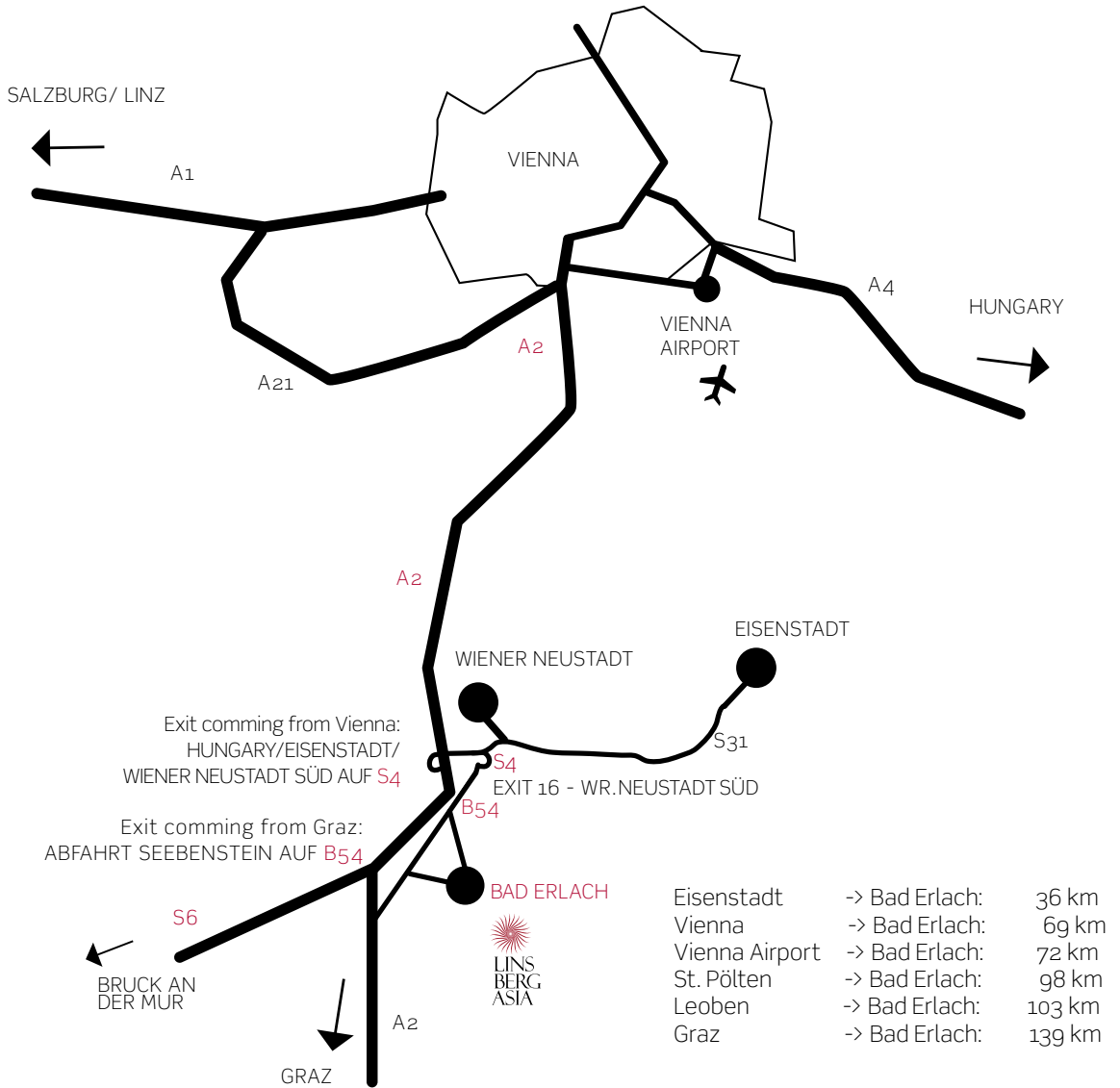
Linsberg deluxe breakfast from € 50.50 p. P.

Linsberg fusion brunch from € 48.50 p. P.

4-course menu „Thai Dinner“ from € 53.00 p. P.

Reservations: restaurant@linsbergasia.at or 02627/48000.

How to find us:



GETTING HERE BY TRAIN

Bad Erlach can be easily reached from the Wien Meidling railway station with the ÖBB (Austrian Federal Railway). Almost hourly either directly to Bad Erlach (journey time max. 40 min.) or with transfer in Wiener Neustadt (journey time max. 60 min.) The railway station Bad Erlach is about a 10-minute walk from the thermal and hotel. A free guest shuttle from the railway station to the hotel is available subject to advance notice (until 48 hrs. before arrival) and availability.



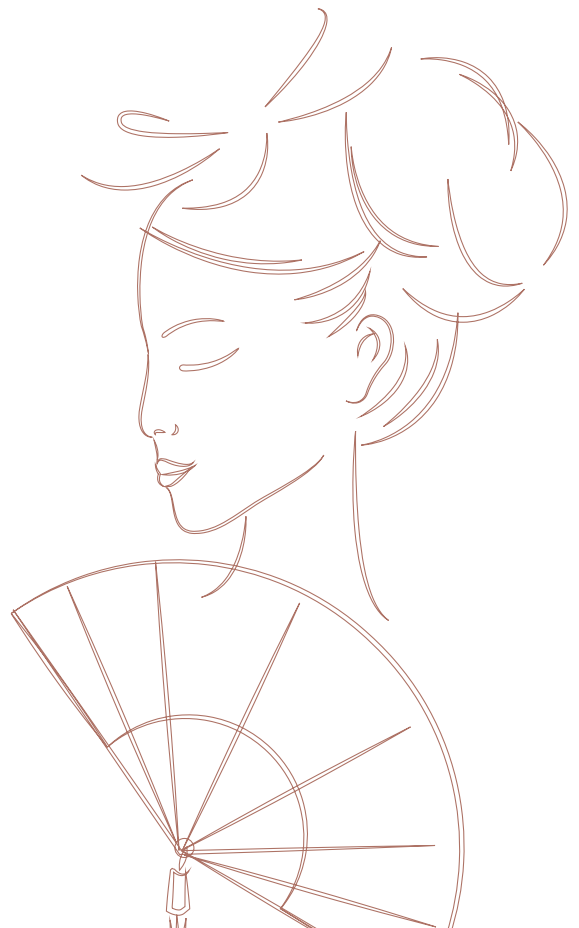
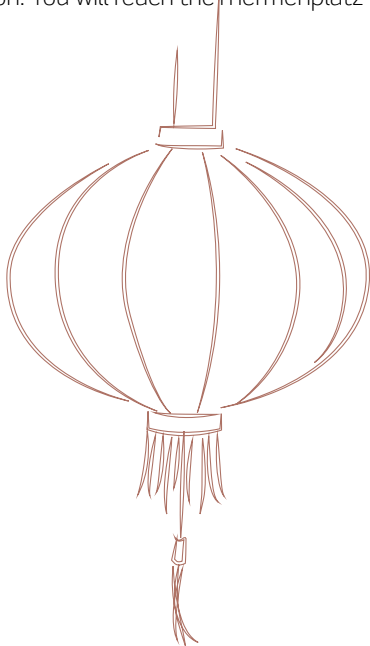
GETTING HERE COMING FROM VIENNA (A2):

By car you can get to us via the A2 southern motorway. At the junction Wiener Neustadt Süd, leave the A2 for the S4 in direction of Eisenstadt. Leave the S4 at Exit 16/Wiener Neustadt Süd and in the roundabout take the 3rd Exit into Günser Strasse. Follow the course of the road for some 2.5 km and turn left into Erlacher Strasse. Follow the course of the road. At the roundabout, take the 2nd exit and continue driving straight on until the city limits of Bad Erlach. Turn right after the bridge into Thermenstrasse and continue driving straight on. You will reach the Thermenplatz in Bad Erlach.

GETTING HERE COMING FROM GRAZ/BRUCK A. D. MUR (S6/E 59):

By car you can get to us via the A2 southern motorway. Exit the A2 at the junction Seebenstein for the S6 and continue driving straight onto the Seebenstein interchange. Leave the Seebenstein interchange and turn left into Wechselbundesstrasse B54. Follow the course of the road until the city limits of "Schwarzau". Follow the course of the road and before leaving the city limits turn right into the country road "L4092 Erlacher Strasse".

At the roundabout, take the 1st exit and continue straight over the bridge to the city limits of Bad Erlach. Turn right after the bridge right into Thermenstrasse and continue driving straight on. You will reach the Thermenplatz in Bad Erlach.





Hotel & Spa Linsberg Asia****S
Thermenplatz 1, 2822 Bad Erlach | Lower Austria
+43 (0) 2627/48000
mail@linsbergasia.at
www.linsbergasia.at/en

16+



Subject to all typographical errors and changes. Valid until revocation. October 2024.